

360 Insect Concentrate

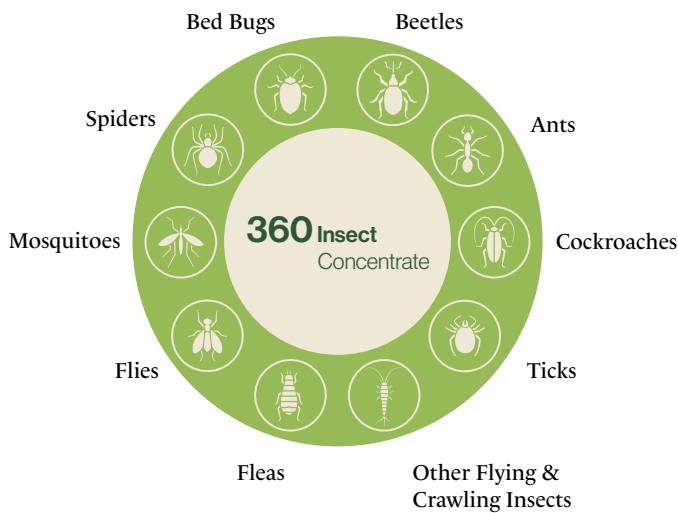
Your best choice for pest control

- ✓ Broad spectrum
- ✓ Research-based proven performance
- ✓ Stable, well mixing formulation
- ✓ Kills bugs resistant to pesticides

SAFE AND EFFECTIVE*

- Begins working in seconds
- Superior performances against other plant-based products
- Kills bed bugs resistant to chemical pesticides
- No water runoff restrictions or setbacks*
- FIFRA exempt 25(b)

OUR TECHNOLOGY



*When used as directed



INNOVATIVE
mode of
action

FOR USE

Indoors



Outdoors



Misting Systems



HOW IT WORKS

Natural insecticidal power of plant-derived active ingredients with a dual mode of action:

Physical:
Dissolves the insect cuticle (armor)



Biological:
Blocks insect receptors



HOW TO USE

Spray with a backpack sprayer or mister in places where insects accumulate.

Concentrate: dilute 1-8 oz per gallon depending on the severity of the infestation.
(1 gallon of the concentrate to 16-120 gallons of water)

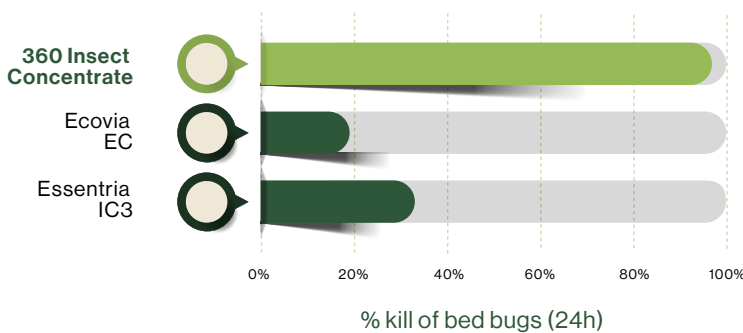
In sprayers apply at 1-1.5 gallon of the diluted solution per 1000 sq. ft.

In mister or fogger systems, apply at 0.2 gallon of the diluted solution per 1000 cu. ft.

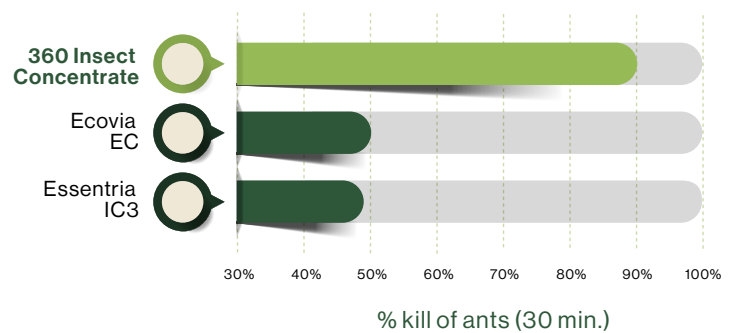
Re-apply when necessary.

SUPERIOR PROVEN PERFORMANCE

Against Bed Bugs



Against Ants



No Need to Choose Between What Works
and What is Good for the Planet